

COAL HERITAGE

RFCS Accompanying Measure Project

NEWSLETTER



CoalHeritage project has received funding from the Research Fund for Coal and Steel under grant agreement No 101112138



Introduction

The rise in global temperature that took place over the last decades has urged most global nations to take immediate and effective actions towards climate change mitigation. The lowering of greenhouse gas emission is strongly connected to actions that involve the closure of coal mines and power plants and their replacement by Renewable Energy Sources (RES). The use of RES for the production of electric energy might have a negative impact on communities and residents, located in regions that are in a coal transition phase, as they are heavily connected to the mining activity.

CoalHeritage (Conservation and promotion of the Coal Mining Heritage as EU's cultural legacy) is an RFCS Accompanying Measure Project that aims to play a crucial role in the process of climate change mitigation, and alleviation of any negative impact this process might have on communities and residents located in coal transition regions. The project is run by a consortium consisted of 6 partners (Fig.1), **CERTH** (Coordinator), **KOMAG**, **PV**, **BRGM**, **GIG** and **DMT-THGA**, from 5 European Countries,

each with specialised background in heritage and coal mine transition.

Role and Objectives

CoalHeritage's role in the process of climate change mitigation and alleviation of negative impact this might cause is directly connected to the development of an interregional network for the protection and promotion of the coal mining heritage in these regions. The project aims to support its role by making communities and residents in coal transition regions less dependent on the coal and lignite mining industry through repurposing of coal mines. The latter will be achieved through the creation of new jobs in coal transition regions that are related to new economic sectors in relation to the coal and mining industry, such as tourism.

The main objectives of **CoalHeritage** are: 1) Identification of processes needed to declare coal sites as heritage areas (Work Package 2), 2) Enhanced management in the

coal regions in transition, improving health and safety of employees as well as minimising the environmental impact of coal mines in transition (WP3), 3) Design and develop a European Visual Map Journal (EVMJ) (WP4) and 4) Dissemination and network development (WP5), all aiming to support the just transition of the coal sector and coal dependent regions. The duration and responsibilities for each work package are presented in table 1.

Table 1. Work package timeline and partner

Work Package	Work Package Title	Lead Partner	Start - End Month
1	Coordination	CERTH	1 - 24
2	Status quo of coal mining heritage in Europe	GIG	1 - 12
3	Inventory of assets and management of sites	KOMAG	1 - 12
4	Creating a European Visual Map Journal for coal heritage	CERTH	1 - 24
5	Development of a network for the promotion and protection of the mining heritage	PV	1 - 24

The project had as starting date the **01.07.2023**, with a total duration of 24 months, and is expected to last until **30.06.2025**. The activities expected to be achieved by the end of month 3 (Sept 2023) such as Milestones (MS) 1 and 3 and Deliverable (D) 5.1 (in red color in Fig.2) have been successfully accomplished. **MS1** represents the 1st in person meeting (**kick-off meeting**), organised by **CERTH** with all partners, to set up the project's action plan. **MS3** is related to the identification of the stakeholders and definition of different stakeholder categories to be approached for promotion and information about project activities, which took place during the **kick-off meeting**. **Deliverable 5.1** represents the **Communication, Dissemination, and Exploitation (CDE) plan**, part of WP5: Development of a network for the promotion and protection of the mining heritage, expected to be followed during and after the implementation of the project. Figure 2 presents the timetable of the project, indicating the timing of each activity per WP.

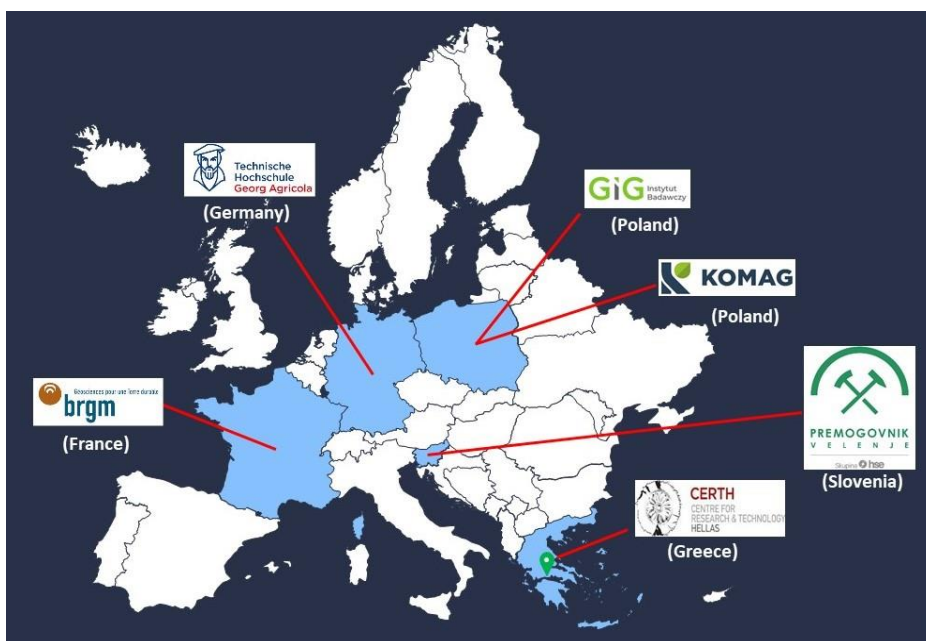


Figure 1. Geographic location of project partners with their respective logos

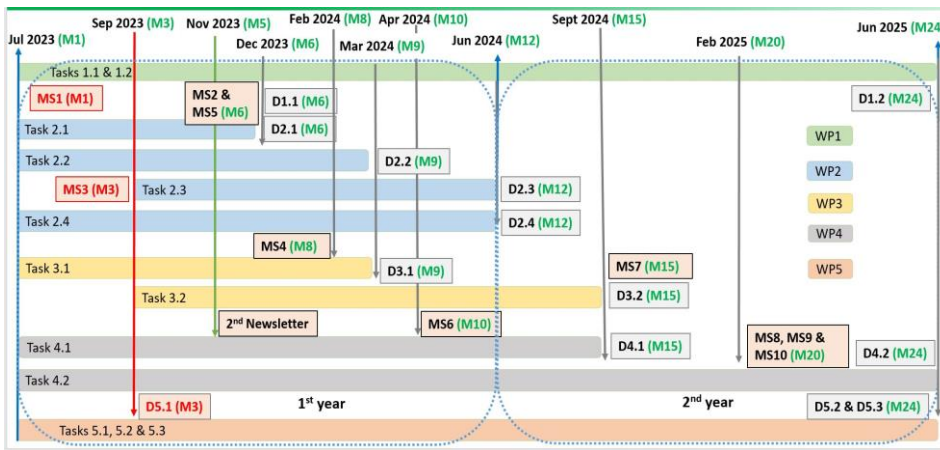


Figure 2. Project timeline indicating the timing of each task, deliverable and milestone per WP

MS1 (Kick-off meeting)

The **kick-off meeting** of **CoalHeritage** project, took place on the 11th of July 2023, directed and organized by Project Coordinator **CERTH**. The meeting opened with the welcome speech and presentation of Project Partners (**KOMAG, PV, BRGM, GIG, and DMT**) by Dr. Nikolaos KOUKOZAS, Director of Research at **CERTH**. Following the introduction, all Project Partners gave a small presentation that included information with regards to their background, research interest and involvement in European and National Projects. The meeting also included the presentation of context regarding the project’s WPs, as well as an exchange

of views between project members (Fig.3) on next steps and the setting of the project’s action plan.

MS3 (Stakeholder Identification)

During the **kick-off meeting** in Athens, all Project Partners proceeded to the identification of stakeholders for the **CoalHeritage** project. As proposed, the stakeholders will derive from Research/education, Industry, Civil Society Organizations, National, European and International networks as well as local communities as presented in table 2 on page 4.



Figure 3. Group photo of project members of the CoalHeritage RFCS Project

Deliverable 5.1 (CDE plan)

Part of the success of a research project is the proper awareness of the project and dissemination of its results to target groups, in order to gain as much widespread attention as possible. The **CDE plan** describes the activities expected to be used for the successful promotion of the project and dissemination of its results. The **CDE plan**, with due date the 30th of September, has been successfully submitted and uploaded on European Commission website in order to be approved by the Project Officer. The main goal of **CDE plan** is to achieve the greatest possible promotion of the **CoalHeritage** Project to interested parties and the general public. The methodology used to achieve maximum promotion involves tools that will be used for communication and promotion during and after the implementation of the project, as well as dissemination of results after its completion. The project’s website (<https://coalheritageproject.eu>) represents one of the main tools that will be used for communicating and disseminating the results and actions related to the **CoalHeritage** project. The website will provide access to general information, the aims, actions and all deliverables of the project in digital form. Another significant tool is the project’s presence on social media channels. The project has its own Facebook page (<https://www.facebook.com/profile.php?id=100094750021179>) @CoalHeritage, X account (<https://twitter.com/CoalHeritageU>) and a LinkedIn profile (<https://www.linkedin.com/in/coalheritage-project-eu/>) where the project news and events are shared. All social media channels can be accessed by clicking on the links provided in brackets or by hovering on top of the **QR codes** provided in the **Contact and Connect** section. These channels will allow project partners to connect to the **CoalHeritage** project and distribute relevant to it information through their channels.

Table 2. Key target groups, potential actors and benefits of the project

Project stakeholders	Potential actors	Benefits from the project
Research/education	Research organizations/ institutions, universities, post-secondary/ secondary/ primary education institutions, other education organizations and NGOs that are in the vicinity of the coal mining areas	Increased knowledge on the value of coal mines as industrial/cultural heritage and promotion as such, on a local, national and European scale. This will ultimately increase public acceptance and will prevent the deterioration of the mines' assets.
Industry	Coal mining companies, companies that will undertake mine reclamation and conversion to museums	Solutions and visibility concerning mines near closure, recently closed and/or abandoned mines. Increase of public and private funding for the reclamation and valorisation of mines
CSOs (Civil Society Organisations)	Private funding agencies, Non-Governmental Organisations, coal mining trade unions, grassroots organisations	All types of CSOs interested in industrial heritage and its promotion will benefit from the resulting tool of CoalHeritage, the EVMJ.
National, European and international networks	European Route of Industrial Heritage (ERIH)	Enrichment of industrial routes and networks in systematically documented coal mines within a heritage/tourism framework.
Local communities	Local authorities, tourist organisations, businesses	Promotional material that will increase visibility and touristic interest both in a local and national/European scale, and a new type of visitors interested in industrial heritage.

What is next?

Deliverables 1.1, part of WP1 will provide a “Comprehensive overview of the project” and **Deliverable 2.1**, part of WP2, will be a “Report on the coal transition strategy of the European countries”. Both deliverables are due on month 6 (Dec. 2023) of the project. In

addition, 2 milestones, **MS2** & **MS5**, have same due date as the previously mentioned deliverables. **MS2** represents a “Quality check that is done through monthly and short web-meetings” to monitor the progress of the project, and **MS5** which consists of an “Internal workshop to determine the

categories and groups of objects to look at” during the development of the project. Last but not least, the **2nd issue** of the **CoalHeritage Newsletter** will be available at the end of **M6 (November 2023)**, so stay tuned and get connected in order to find out the latest news regarding **CoalHeritage**.

Contact and Connect

E-mail: coalheritageprojecteu@gmail.com

QR codes for Social Media Channels:

LinkedIn



X (Twitter)



Facebook



Coal Heritage Partners and Members

ETHNIKO KENTRO EREVNAS KAI TECHNOLOGIKIS ANAPTYXIS (CERTH, Greece)

Dr. Nikolaos Koukouzas (Editor)
koukouzas@certh.gr

Dr. Theodoros Zarogiannis
zarogiannis@certh.gr

Ms. Ioanna Badouna
badouna@certh.gr

Ms. Eleonora Manoukian
manoukian@certh.gr

Ms. Rania Karametou
karametou@certh.gr

Mr. George S. Maraslidis
maraslidis@certh.gr

Mr. Stratos Giouvanidis
ef.giouvanidis@certh.gr

Ms. Eleftheria Karampetsou
karampetsou@certh.gr

Ms. Evangelia Zygouri
zygouri@certh.gr

Mr. Pavlos Krassakis
krassakis@certh.gr

Mr. Andreas Karavias
karavias@certh.gr

Mr. Dimitris Karapanos
karapanos@certh.gr

Dr. Georgios-Orion Marias (Editor)
g.marias@certh.gr

Mr. Dan-Cezar Dutuc (Editor)
dutuc@certh.gr

INSTYTUT TECHNIKI GORNICZEJ KOMAG (KOMAG, Poland)

Dr. Kamil Szewerda
kszewerda@komag.eu

Dr. Dariusz Michalak
dmichalak@komag.eu

Dr. Jarosław Tokarczyk
jtokarczyk@komag.eu

PREMOGOVNIK VELENJE DOO (PV, Slovenia)

Ms. Tadeja Jegrišnik
tadeja.jegrisnik@rlv.si

Mr. Matjaž Kamenik
matjaz.kamenik@rlv.si

BUREAU DE RECHERCHES GEOLOGIQUES ET MINIERES (BRMG, France)

Dr. Laurent Beccaletto
l.beccaletto@brgm.fr

Dr. Christophe Didier
c.didier@brgm.fr

GLOWNY INSTYTUT GORNICTWA (GIG, Poland)

Dr. Weronika Pojoy Guzman
wpojoy@gig.eu

Dr. Robert Hildebrandt
rhildebrandt@gig.eu

Dr. Sylwia Jarosławska- Sobór
sjaroslawska@gig.eu

DMT-GESELLSCHAFT FUR LEHRE UND BILDUNG MBH (DMT-THGA, Germany)

Dr. Tansel Dogan
tansel.dogan@thga.de

Mr. Hernan Flores
Hernan.Flores@thga.de